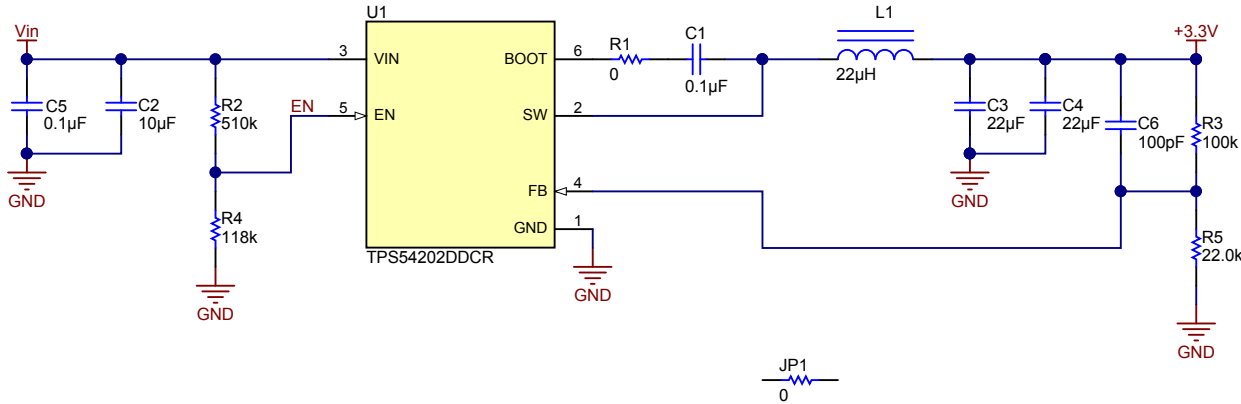
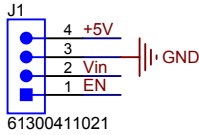


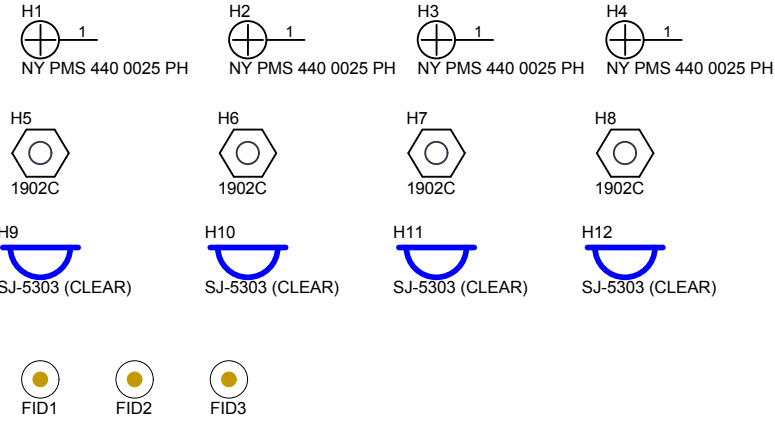
NOTES:

INPUT VOLTAGE: 7-V to 20-VDC, 12-VDC IS RECOMMENDED  
PEAK INPUT CURRENT: 1A

OUTPUT VOLTAGE: 3.3VDC   Nominal  
OUTPUT CURRENT: 1A       Nominal  
OCP THRESHOLD: 2A  
OTP THRESHOLD: 160 degree



Orderable: N/A	Designed for: Public Release	Mod. Date: 6/17/2016
TID #: TIDA-00949	Project Title: 3.3V 1A DC DC module with single layer and TO-24	
Number: TIDA-00949	Rev: E1	Sheet Title:
SVN Rev: Version control disabled	Assembly Variant: [No Variations]	Sheet: 2 of 3
Drawn By:	File: TIDA-00949 RevA01.SchDoc	Size: B
Engineer: Jason Tao	Contact: http://www.ti.com/support	



PCB Number: TIDA-00949

PCB Rev: E1

Label Table	
Variant	Label Text
001	ChangeMe!
002	ChangeMe!

ZZ2  
Assembly Note  
These assemblies are ESD sensitive, ESD precautions shall be observed.

ZZ3  
Assembly Note  
These assemblies must be clean and free from flux and all contaminants. Use of no clean flux is not acceptable.

ZZ4  
Assembly Note  
These assemblies must comply with workmanship standards IPC-A-610 Class 2, unless otherwise specified.